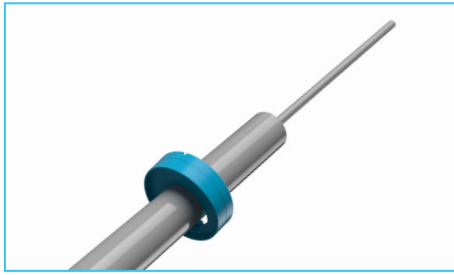


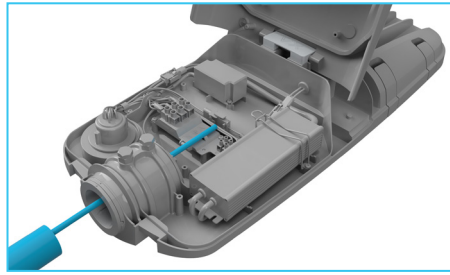
LUMINAIRE INSTALLATION



1.

FOR SPIGOT COLLAR B ONLY

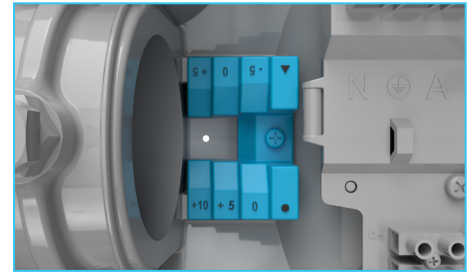
Feed the supply cable through the Spigot Collar Grommet, then slide the Grommet onto the spigot as shown



2.

Feed the supply cable through the assembled spigot collar into the spigot entry hole of the luminaire

Then slide the luminaire onto the spigot, ensuring the luminaire is firmly seated on the spigot and cannot slide in any further

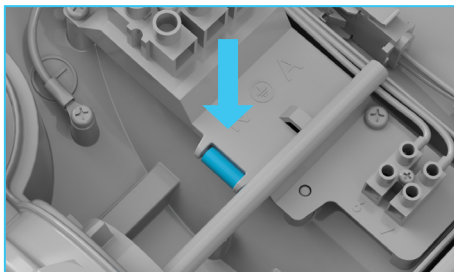


3.

FOR SPIGOT COLLAR B ONLY

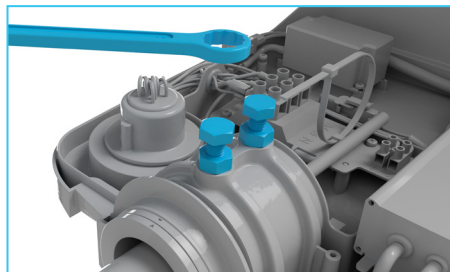
Butt the end of the spigot into the step labeled with the desired tilt angle

Collar B angle step - inside gear chamber



4.

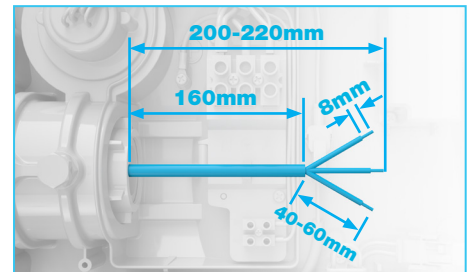
Using the inbuilt spirit level, rotate the luminaire on the spigot until level



5.

FOR SPIGOT COLLAR A OR B ONLY

Using a 17mm spanner, evenly tighten the 2 x M10 screws inside the gear chamber. Apply 25Nm torque to secure the luminaire to the spigot



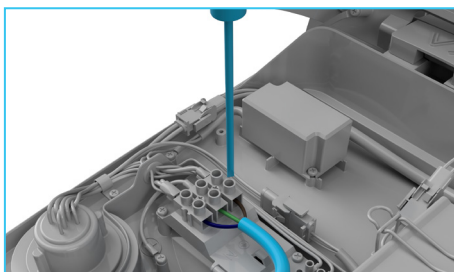
6.

Draw the 3-core power supply flex to 200-220mm inside the chamber

Strip 40-60mm of the outer sheath, ensuring enough sheath remains for the zip tie to tighten around

Strip insulation off each conduction by 8mm


Then thread the supply cable through the 2 x supplied zip ties inside



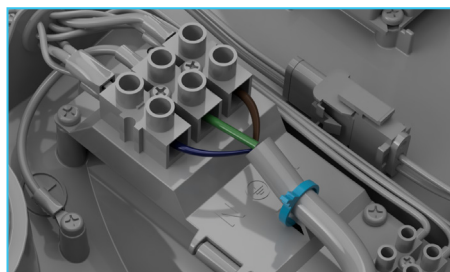
7.

Using a 4mm flat-blade screw driver, terminate the wires from the supply cable into the terminal blocks as shown, applying 0.8Nm torque to secure in place:

N Neutral Wire (Blue)

 Earth wire (Green / Yellow)

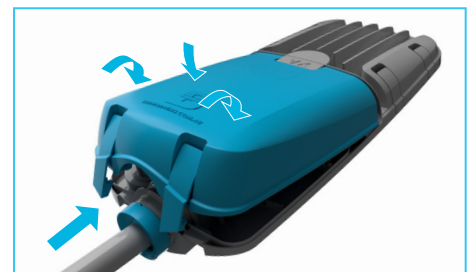
A Active Wire (Brown)



8.

Secure the supply cable by tightening the 2 x zip tie strain relief around the sheath as shown.

Trim both zip tie tails and ensure all wires will not be pinched when the gear cover is closed

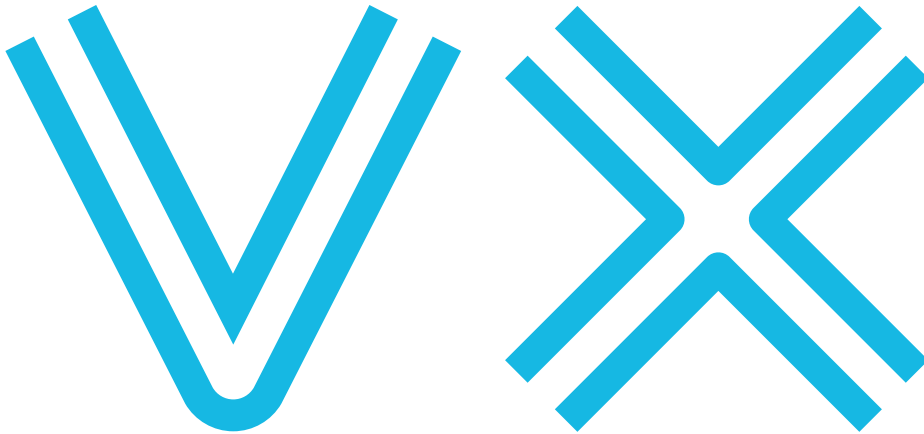


9.

Close the gear cover, ensuring all wires will not be pinched

FOR OPTIONAL SPIGOT COLLAR GROMMET ONLY

Ensure the rubber boot on the spigot collar is firmly in place to prevent water and insects from entering into the gear chamber



INSTALLATION GUIDE

BRAUMS
Roadway Lighting



Quality
ISO 9001



OHS
ISO 45001



Environment
ISO 14001



www.braums.com.au

BRAUMS Pty Ltd

Telephone: +61 2 9684 3300

Facsimile: +61 2 9684 3390

E-mail: info@braums.com.au

Unit M, 10 - 16 South St,
Rydalmere NSW 2116 Australia
PO Box 122 Ermington NSW 1700

ABN 31 150 551 732

BEFORE WE GET STARTED...

CAUTION

This product must be installed by a qualified electrician in compliance with the AS/NZS3000: wiring rules

Read all instructions prior to installation

TOOLS REQUIRED



Safety insulating gloves



17mm ring spanner/socket



4mm flat-blade screw driver

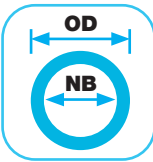


2mm flat-blade screw driver



3mm Hex Head Allen Key

FITTING GUIDE



Spigot Size:
48mm OD/40mm NB
42mm OD/42mm NB



Cable Size:
3 x 6mm² max



Dimming Cable Size:
2 x 1.5mm² max

NEMA PHOTOCELL

The Nema photocell receptacle will be located on the top or bottom of the luminaire

Twist and lock the provided Nema-photocell in a clockwise direction to the photocell receptacle as shown



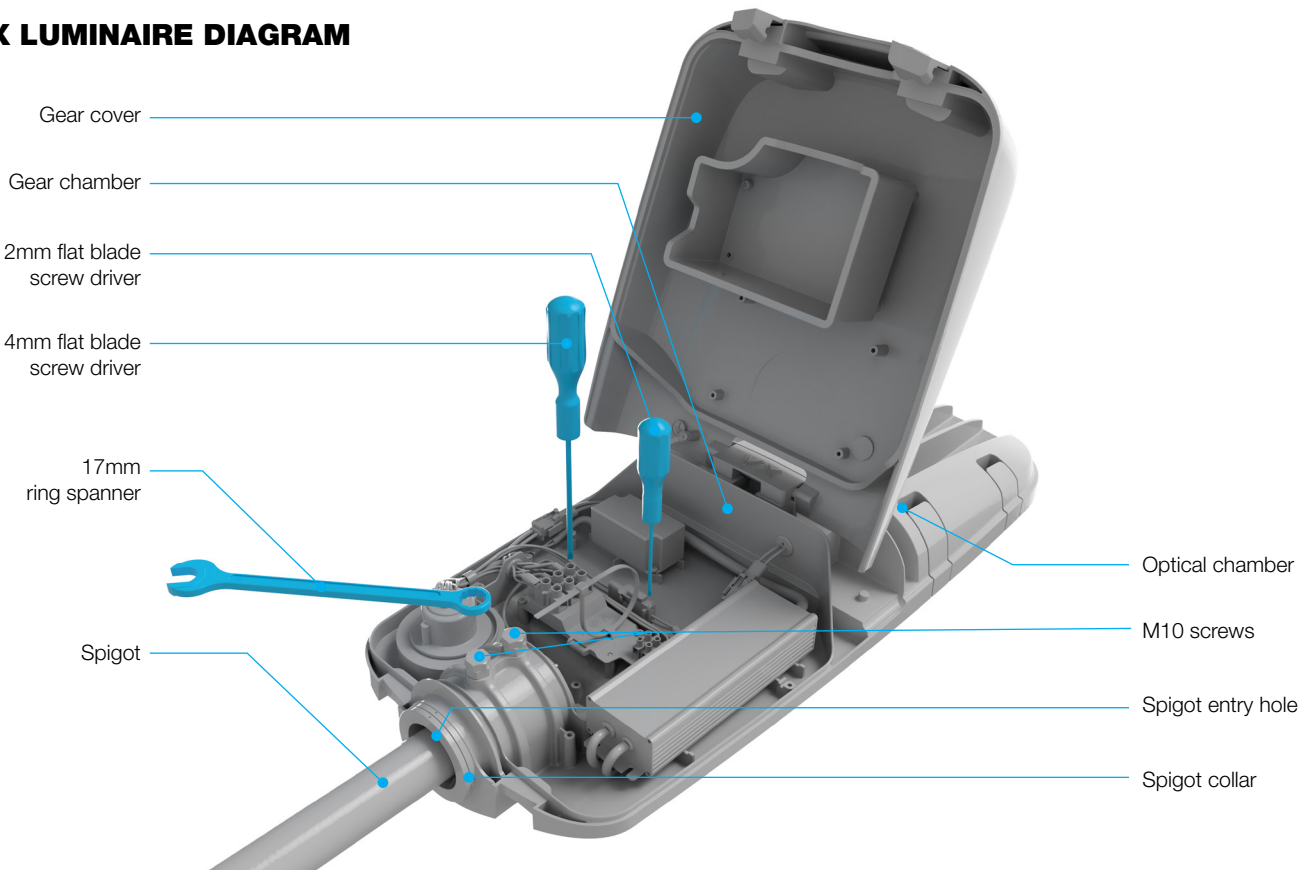
TOOL-LESS ENTRY

The luminaire has tool-less entry

Open the gear cover using the latches as shown



VX LUMINAIRE DIAGRAM



WHICH SPIGOT COLLAR DO YOU HAVE?

Follow instructions for the spigot option provided with this luminaire (located inside the spigot entry hole of the luminaire in the packaging with the 2 x M10 screws in place)

**For Standard Fitting at 0° mounting the luminaire comes pre-fitted with 0° Spigot Collar (Collar A)
All other mounting options are purchased separately**

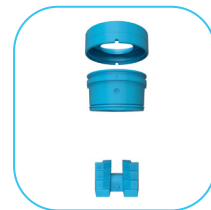
Depending on your installation type, the VX will be fitted with:

Collar A - Zero Degree Spigot Collar (Standard Fitting) or

Collar B - Upcast Spigot Collar (-5/+15 Degrees) (Available on Request)

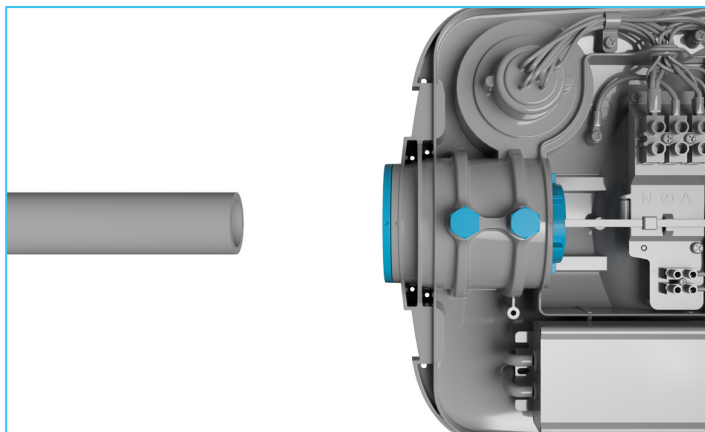


Collar A



Collar B

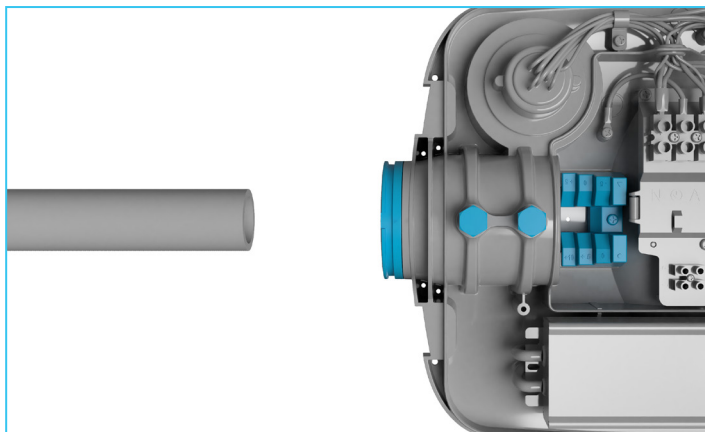
SPIGOT COLLAR A: ZERO DEGREE



- i) Loosen the 2 x M10 screws inside the gear chamber

Continue to step 1 >

SPIGOT COLLAR B: UPCAST



The luminaire is factory fitted with the step for setting the angle inside the gear chamber as shown

- i) Loosen the 2 x M10 screws inside the gear chamber and the grub screw located on the underside of the luminaire spigot entry
- ii) Slide the spigot collar into the spigot entry hole, aligning the symbols on the luminaire and spigot collar to achieve the desired tilt angle

▷◁ +5°, 0° or -5°

○◁ +10°, +5° or 0°

- iii) Then tighten the grub screw to secure the spigot collar in place

The symbols on the step refer to the spigot collar symbol aligned to the luminaire ◁

Continue to step 1 >

